

Work Experience

Options

Job Shadowing

Shadowing allows students to have a short-term experience in the field they are studying. Students gather career information and obtain an awareness of job requirements and duties by observing and speaking with an employer.

Internship

Students are assigned by their teacher to observe and participate (without pay) in work activities related to their technical curriculum. The major objective is for students to acquire expanded learning through exposure to a functionally related work-site with a hands-on experience.

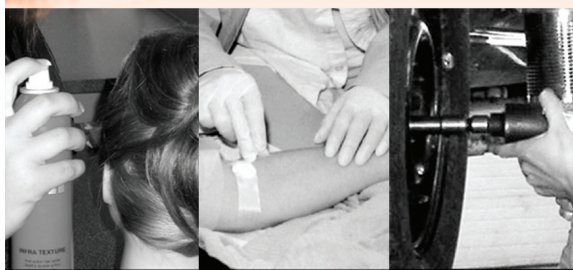
Co-op

Upon successful completion of an internship, students who have mastered entry-level job skills can be placed by their teacher into paid employment that is directly related to their EMCC training. The objective of a co-op is for students to practice more advanced skills in a real employment setting, while still under the guidance of the classroom instructor. Students also benefit from earning a salary while they are learning.



For more information,
please contact:

Ms. Selene Terry
Work Experience Coordinator
Eastern Monroe Career Center
41 O'Connor Road
Fairport, NY 14450
585-387-3820
selene_terry@boces.monroe.edu

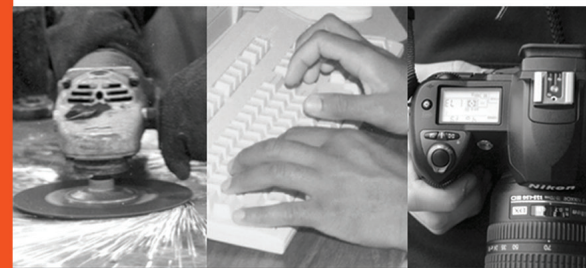


Eastern Monroe Career Center



**What Happened
to the
Class of 2009?**

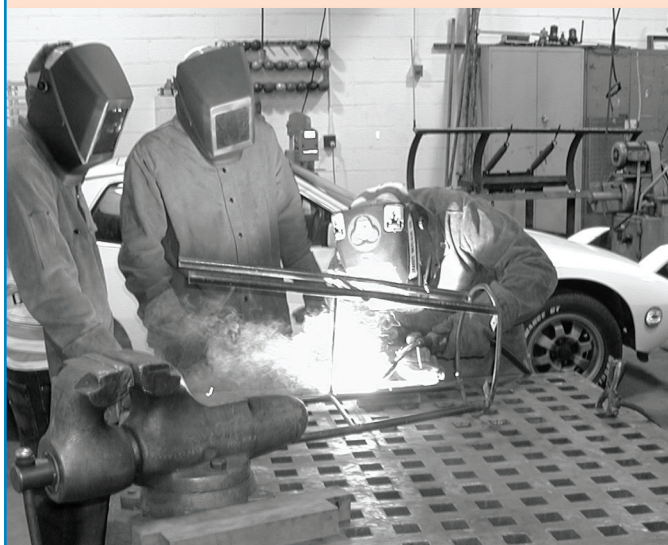
Eastern Monroe Career Center



2009

EMCC Graduate Information

This information provides data on the Class of 2009 and their plans after graduation. This data reflects plans as of December 2009. Employment data represents students who are employed part-time or full-time in a related or non-related field. Out of 389 graduates, 328 responded to the survey.



Total Survey Respondents	328	
Total Attending College	222	68%
2-year college	168	51%
4-year college	54	17%
Employed	168	52%
Military Service	8	2%

Colleges 2009 EMCC graduates attended include:

Albany University	Indiana University of Pennsylvania	St. Francis University
Alfred State College	Jamestown Community College	St. John Fisher
Alfred State University	Johnson & Wales University	St. John's University
Boston Architectural College	Kent State University	SUNY Brockport
Brown University	Keuka College	SUNY Buffalo
Buffalo State College	Liberty University	SUNY Cobleskill
Canisius College	Make-Up Designory	SUNY Geneseo
Champlain College	Mercyhurst College	SUNY Oneonta
Continental School of Beauty	Monroe Community College	University of Richmond
Drexel University	Morrisville State College	University of Virginia
Duquesne University	Nazareth College	Universal Technical Institute
Erie Community College	North Carolina State University	Wheaton College
Fashion Institute of Technology	Ohio State University	Wyo Tech
Finger Lakes Community College	Roberts Wesleyan College	
Gannon University	Rochester Institute of Technology	
Genesee Community College		

Employers hiring 2009 EMCC graduates include:

All City Auto Parts	Homes By Design	R Salon
Alumi Tech	K Salon	Renes Café
Bonsignore Studio & Spa	KB Masonry & Tile	Rochester General Hospital
Cherry Ridge	Kirkhaven Nursing Home	Rural Metro Medical Services
Crest Manor Nursing Home	Lari James Salon	Salon Enza
Delaware North Hospitality	Little Bakery	Scott Miller Salon
Disney World	Maplewood Nursing Home	Scott Nicholas Salon
Fitch Construction	Master Cuts	Scott's Auto Fixit
FlapJack Productions	Matt Sharp Construction	The Lodge at Woodcliff
Generations Child Care	Midvale Country Club	Universal Flooring
Gerber Homes	Monroe Ambulance	Vector Manufacturing
Hair Zoo	Monroe County Sheriff	Water Street Music Hall
Hamilton Productions	Nu-Look Collision	Weco Metal Products
Harmony Place	Panorama Collision	Wegmans
Hastings Collision	Pinehurst Senior Living	
Hewitt Young Electrical	Presstek Printing	